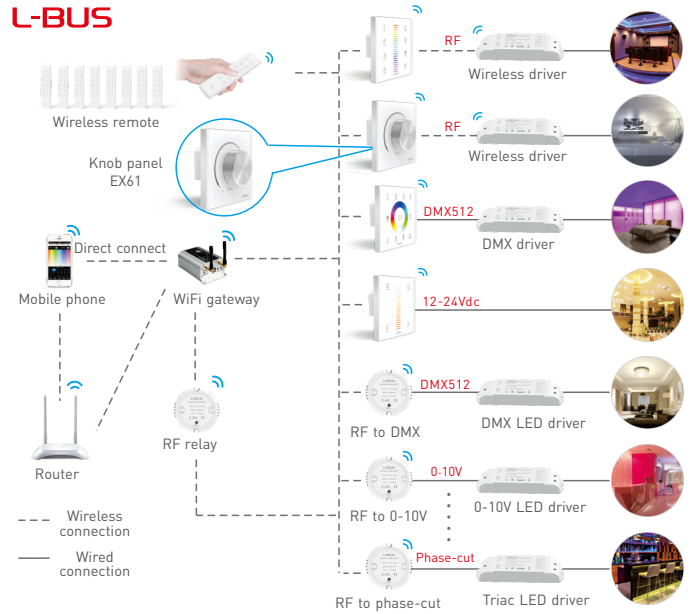


EX61 Knob Panel



Manual
www.ltech-led.com

L-BUS



Product features

- Adopt wireless RF and wired DMX512 protocol 2 in 1 control mode, more flexible and convenient for project installation.
- Within effective range, any quantity of receivers can be connected and maintain synchronous effect.
- With the function of dimming and switching.
- The panel can be controlled by remote, or by mobile phone if add a gateway.

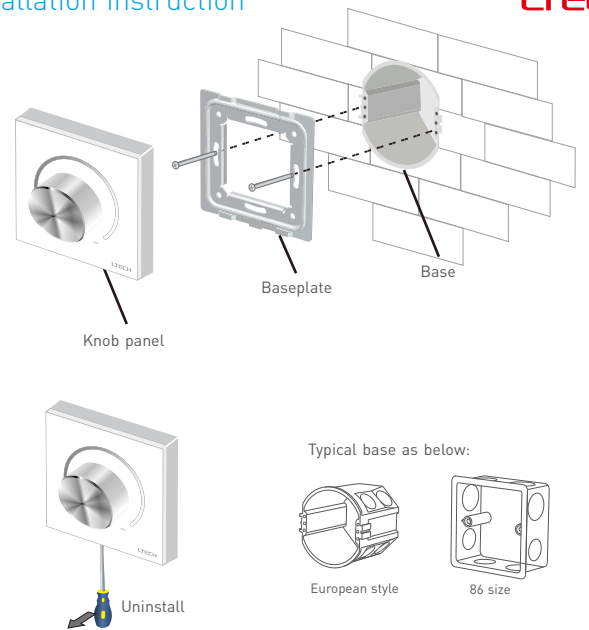
Technical specs

EX61 Dimming Knob Panel

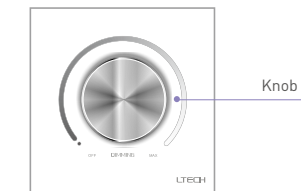
Input Voltage:	100~240Vac	Dimensions:	L86×W86×H50(mm)
Output Signal:	RF 2.4GHz, DMX512	Package Size:	L106×W106×H60(mm)
Working Temp.:	-10°C~55°C	Weight(G.W.):	235g



Installation instruction

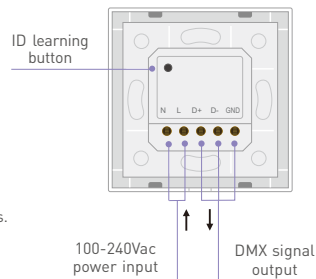


Key functions



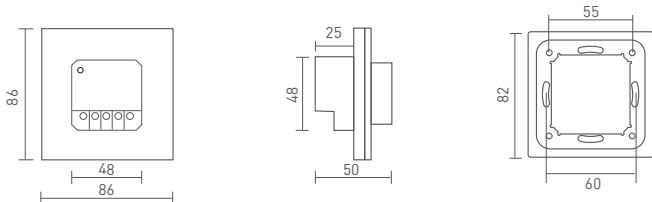
- * Clockwise spin the knob, the brightness increases.
- * Counterclockwise spin the knob, the brightness decreases. Turn off the panel if you spin to the leftmost end (a click can be heard).

Terminals



Product size

Unit: mm



Application composition

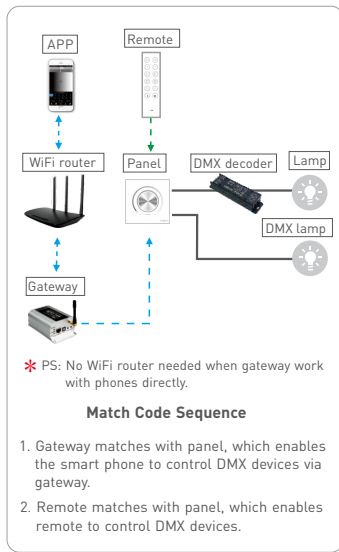
DMX512 Signal Output:

- Knob panel
- Knob panel + Remote
- Knob panel + WiFi master controller
- Knob panel + WiFi master controller + Remote

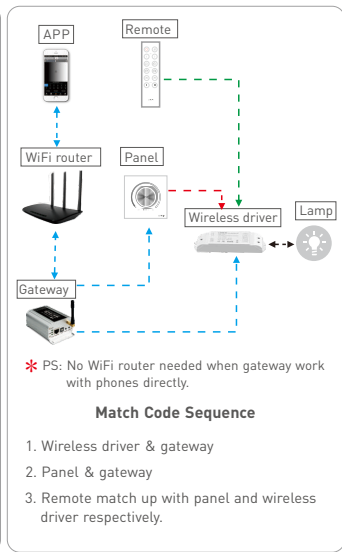
Wireless Control:

- Knob panel + Wireless driver
- Knob panel + Remote + Wireless driver
- Knob panel + WiFi master controller + Wireless driver
- Knob panel + WiFi master controller + Remote + Wireless driver

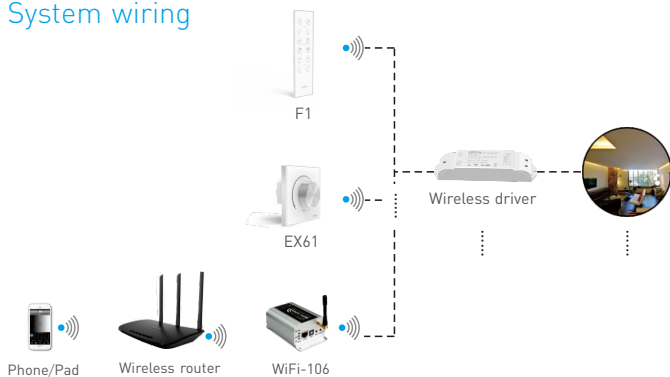
DMX System Wiring



Wireless System Wiring

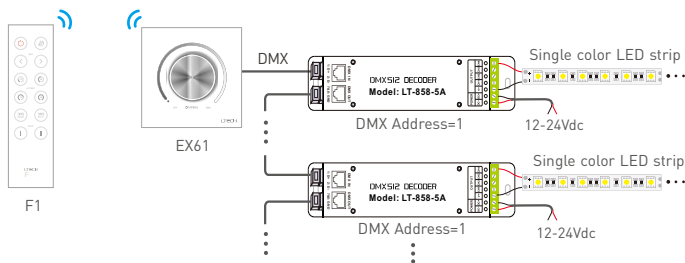


System wiring

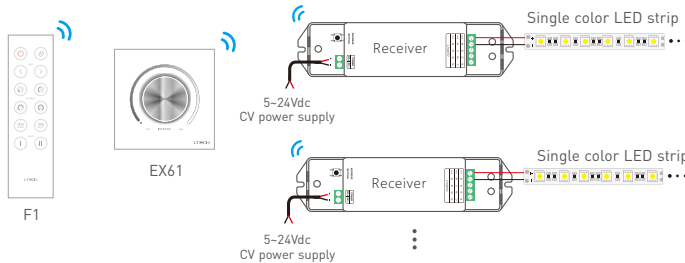


Please refer to the relevant product manual for detailed information.

DMX wiring



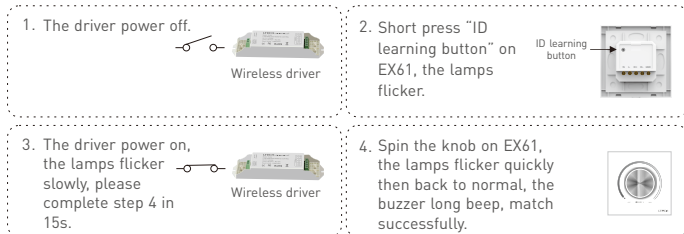
RF wireless wiring



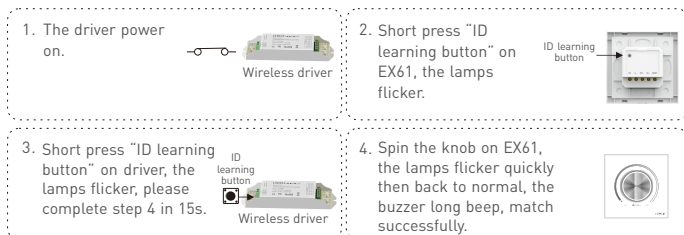
Multiple receivers can be matched with EX61 within effective distance.

Match code between touch panel & receiver

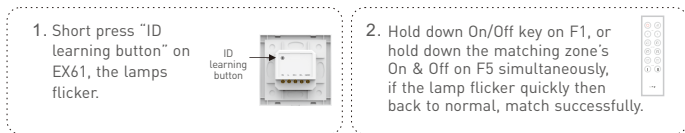
Method 1:



Method 2:

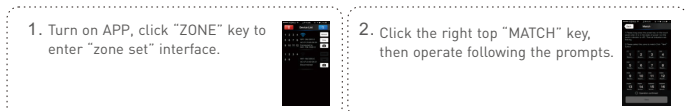


Match code between panel & remote

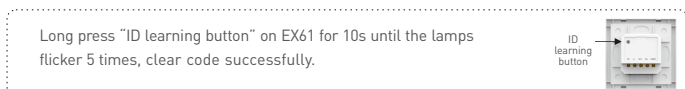


- * Exit match status automatically if over 10 seconds.
- * One knob panel can be matched with max 10 remotes.
- * If knob panel and receiver need to be controlled by remote simultaneously, then match the remote with panel and receiver respectively.

Match code between panel & wifi-106



Clear code



* No further notice if any changes in the manual. Product function depends on the goods. Please feel free to contact our official distributor if any question.

Attention

- Please install the gateway in an open space, make sure no shelter above and ahead of it.
- Please don't use it in wet environment.
- No burning, no heat.
- Please don't open, alter, repair or maintenance the gateway, or it will not be guaranteed.

Warranty agreement

1. We provide lifelong technical assistance with this product:
 - A 5-year warranty is given from the date of purchase. The warranty is for free repair or replacement if cover manufacturing faults only.
 - For faults beyond the 5-year warranty, we reserve the right to charge for time and parts.
 2. Warranty exclusions below:
 - Any man-made damages caused from improper operation, or connecting to excess voltage and overloading.
 - The product appears to have excessive physical damage.
 - Damage due to natural disasters and force majeure.
 - Warranty label, fragile label and unique barcode label have been damaged.
 - The product has been replaced by a brand new product.
 3. Repair or replacement as provided under this warranty is the exclusive remedy to the customer. LTECH shall not be liable for any incidental or consequential damages for breach of any stipulation in this warranty.
 4. Any amendment or adjustment to this warranty must be approved in writing by LTECH only.
- ★ This manual only applies to this model. LTECH reserves the right to make changes without prior notice.