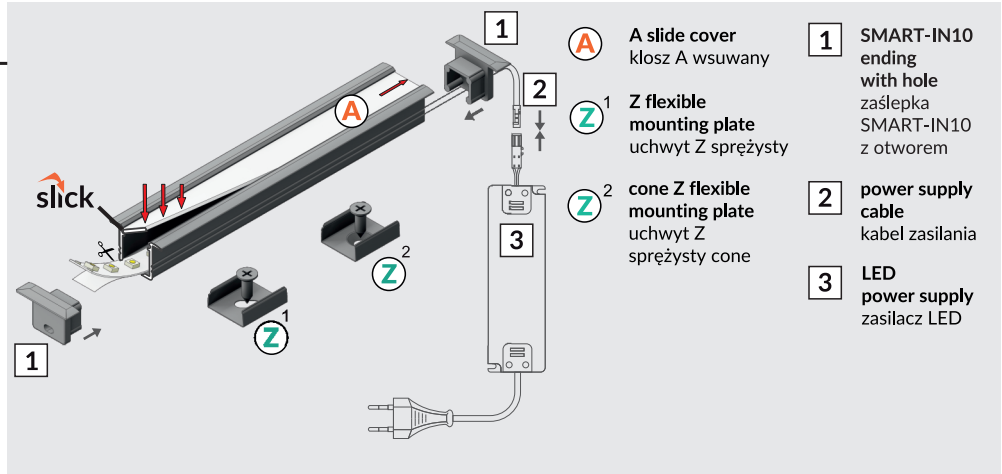
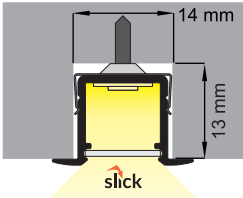
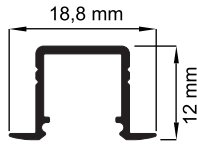


# SMART-IN10 A/Z

## RECESSED PROFILE PROFIL WPUSTOWY



scissors  
nożyczki



pliers  
kombinerki



soldering iron  
lutownica

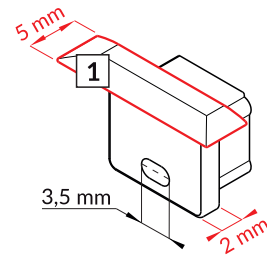
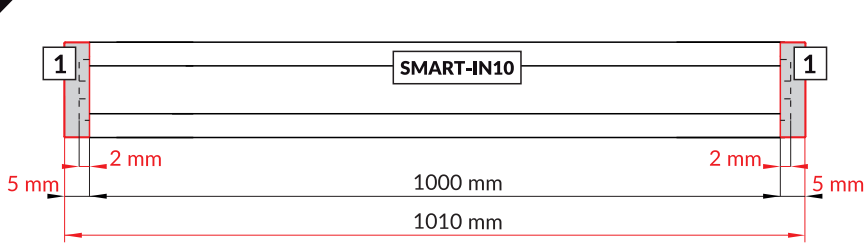


solder  
cyna



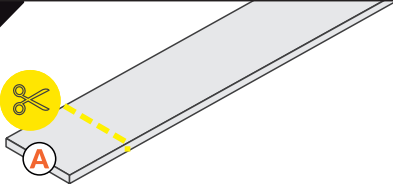
glue  
klej

I



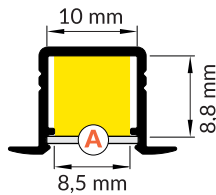
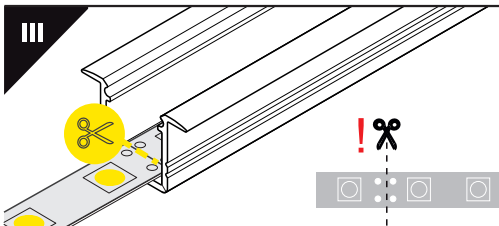
**Note!** Ending thickness increases the length of the luminaire (+ 2 x 5 mm) and the length of the mounting space (+ 2 x 2 mm).  
**Uwaga!** Grubość zaśllepki zwiększa długość oprawy (+ 2 x 5 mm) i długość otworu montażowego (+ 2 x 2 mm).

II



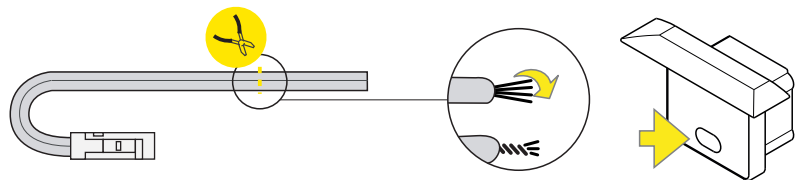
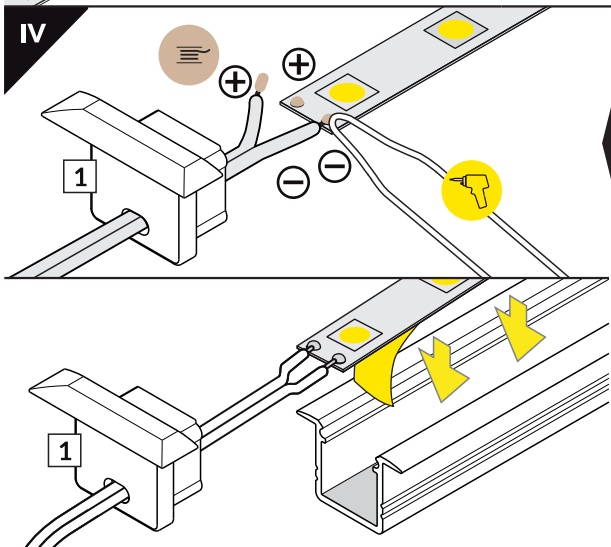
The length of the cover is equal to the length of the profile.  
Długość klosza równa jest długości profilu.

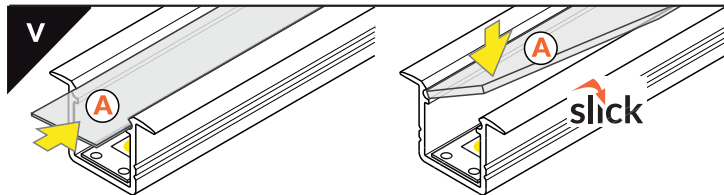
III



Dimensions of the space to install LED source.  
Wymiary przestrzeni do zamontowania źródła LED.

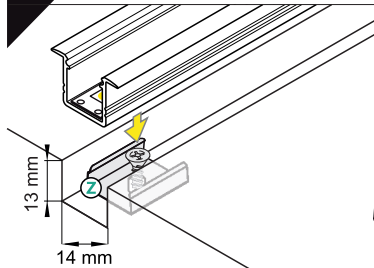
IV



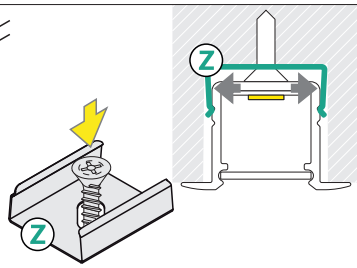


**A** slide cover / klosz **A** wsuwany

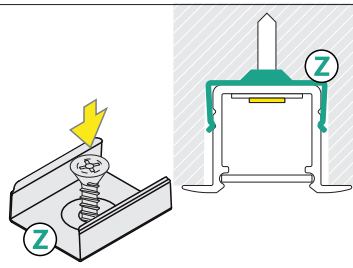
## VI MOUNTING / MONTAŻ



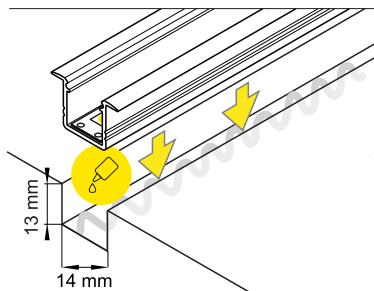
**Z** flexible mounting plate  
uchwyt **Z** sprężysty



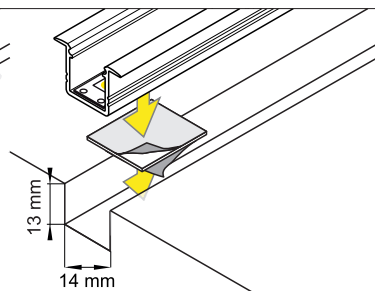
**Z** flexible mounting plate  
uchwyt **Z** sprężysty



**cone Z** flexible mounting plate  
uchwyt **Z** sprężysty cone

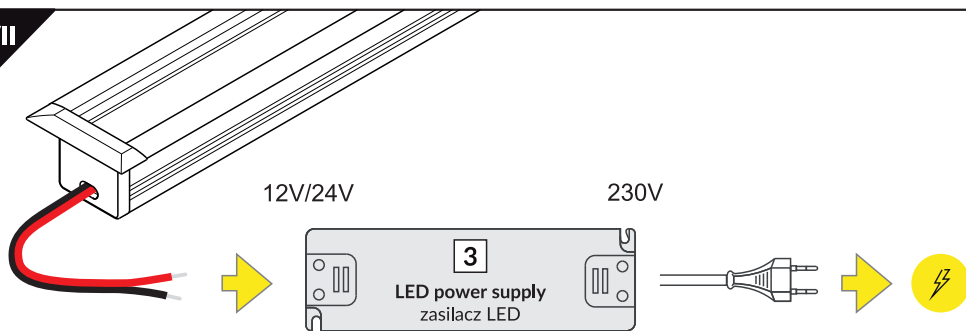


glue  
klej montażowy



two-sided adhesive tape 25x25  
taśma mocująca dwustronna 25x25

## VII



## ACCESSORIES / AKCESORIA

- power switches
- controller + remote
- movement sensors
- 
- włączniki
- sterownik + pilot
- czujniki ruchu