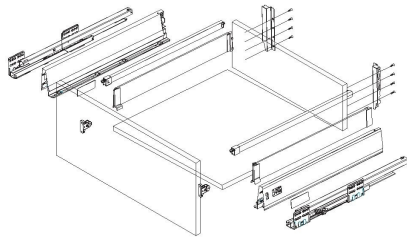
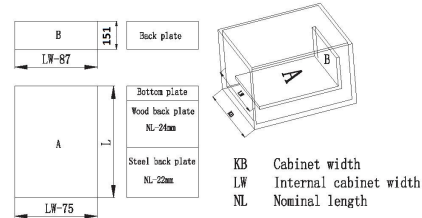


# Installation instructions of drawer system

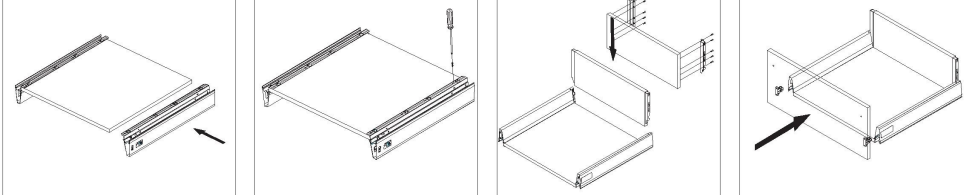
## Basic components



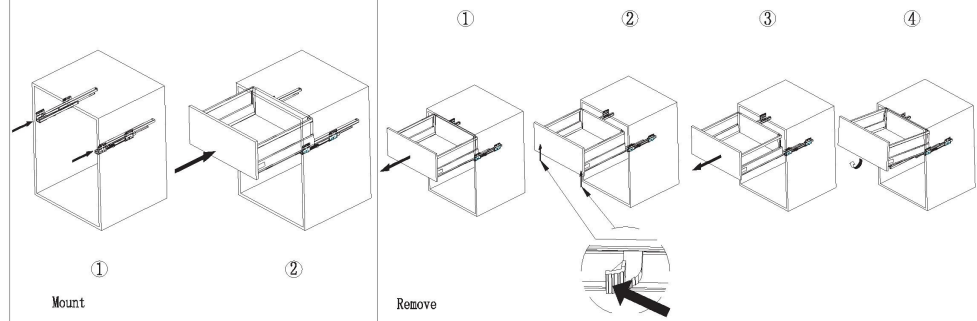
## Cutting dimensions of 16mm thick MDF



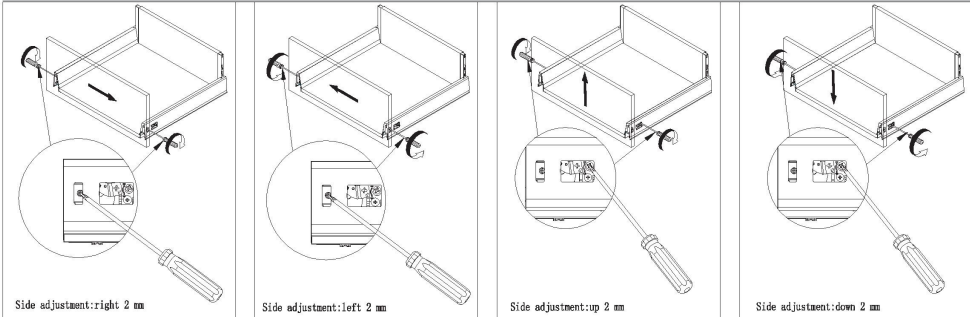
## Install the drawer



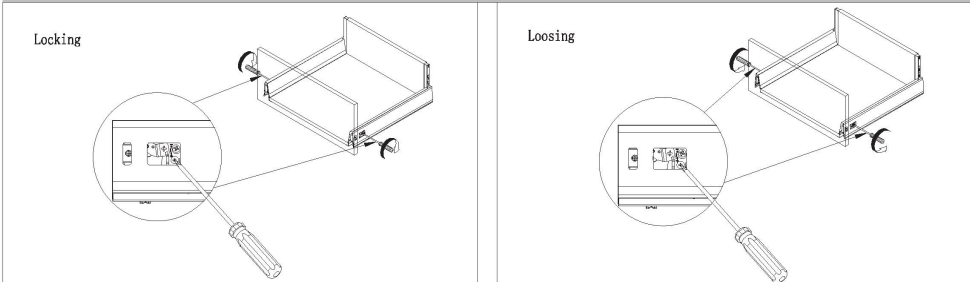
## Mount & remove the drawer



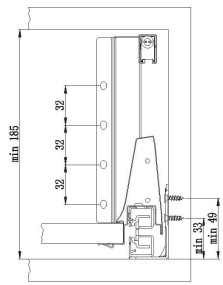
## Adjustment



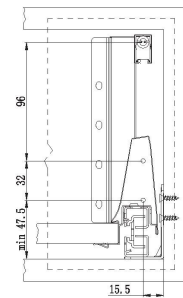
## Locking and Loosing



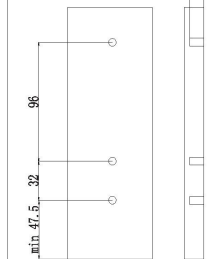
## Required space of the cabinet



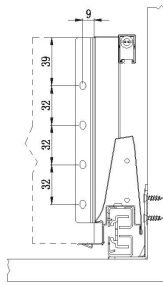
## Installed dimensions of the front connector & panel



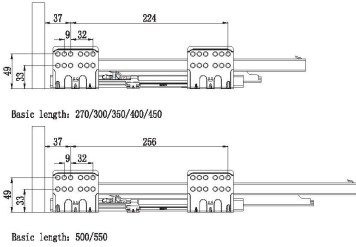
## Drilling dimensions of the panel for INSERTA & automatic installation



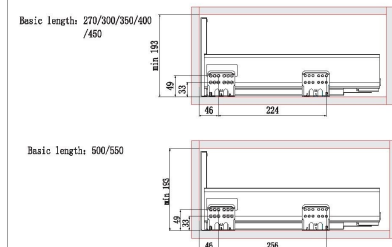
## Installed dimensions of the back plate



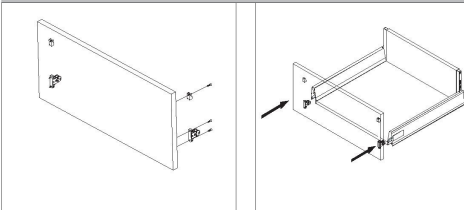
## Installed hole distance of the slide



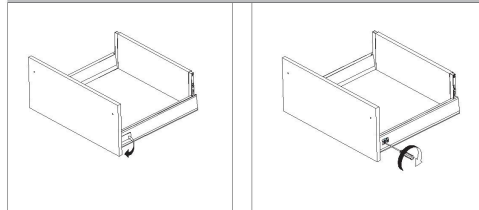
## Required space of the cabinet & installed hole distance of the slide for inner drawer



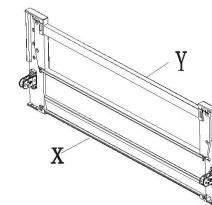
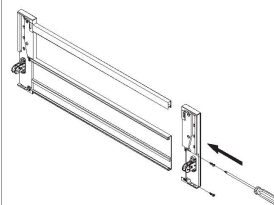
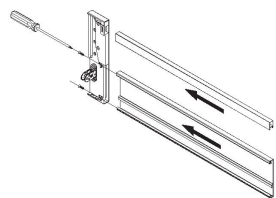
## Install the panel



## Remove the panel

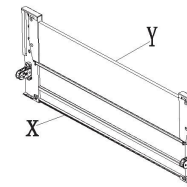
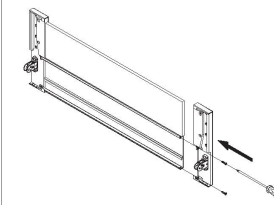
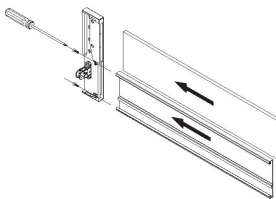


Install the higt-side inner drawer with horizontal bar



X=LW-90mm  
Y=LW-84mm

Install the higt-side inner drawer with panel



X=LW-90mm  
Y=LW-84mm

Install the square bars & heightened side plates

